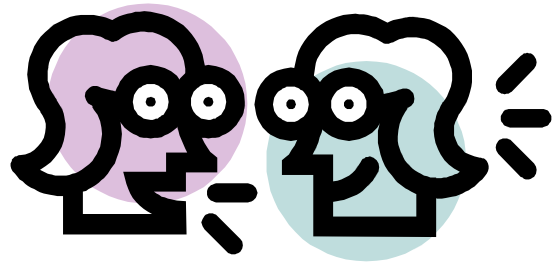




WHISTLER COMMUNITY SERVICES SOCIETY

"A Helping Hand Toward A Healthy Community"

Youth Outreach



Do You Want To Be A PEER EDUCATOR?

Peer Educators...

- Ø Are young adults working or living in Whistler
- Ø Are reliable, responsible and committed to the program
- Ø Complete 20 hours of mandatory training from late October to early December
- Ø Commit 1-5 hours per week to the program from December 2009 to April 2010
- Ø Have a Genuine desire to provide support, empathy, information and referrals to your peers (friends and coworkers)

The Benefits of being a Peer Educator...

- Ø Gain valuable volunteer experience for your resume and career development
- Ø Receive extensive FREE training on team work, facilitation skills, mental health, sexual health, listening and questioning skills, drug and alcohol use and local social service resources
- Ø Meet like-minded young adults and work as a team to increase awareness about social service programs in Whistler
- Ø Be apart of a program that is fun, informative and easy to fit into your current lifestyle
- Ø Receive a nationally recognized certificate in Peer Education

How do I apply?

Please call Davin 604-938-3902, davin@mywcss.org anytime for more information or to set up an interview.

Davin Moore

Davin@mywcss.org, 604-938-3902

Davin Moore

Davin@mywcss.org, 604-938-3902

Davin Moore

Davin@mywcss.org, 604-938-3902

Davin Moore

Davin@mywcss.org, 604-938-3902

Davin Moore

Davin@mywcss.org, 604-938-3902

Davin Moore

Davin@mywcss.org, 604-938-3902

Davin Moore

Davin@mywcss.org, 604-938-3902

Davin Moore

Davin@mywcss.org, 604-938-3902

Davin Moore

Davin@mywcss.org, 604-938-3902